

Thermal Receipt Printer

80MM Thermal Receipt Printer User Manual



Warning : No part of this manual can be changed without agreement. The company reverses the rights to modify the technology, components, software and hardware. You may ask the distributors for more product information. No part of chapter in this manual can be copied or transmitted in any format without permission.

Please keep user manual for reference

Attention

- Put printer on stable surface. Choose firm, level surface where avoid vibration.
- Don't use and store printer in high temperature, high humid and serious polluted place.
- Connect power adapter properly to grounded receptacle. Avoid using the same socket with large power consumption devices that can lead to power fluctuation.
- Avoid water or other objects go into printer. Once happened, turn off printer immediately.
- Print without paper roll will damage printing head seriously.
- Unplug printer from power receptacle if do not use it for a long time.
- Only use approved accessories, never try to disassemble, repair or remodel it.
- Use standard power adapter.
- Use high quality paper, this ensures the printing quality and life of printer.
- Please turn off power before plug/ unplug cable.
- Printer is used only under 5000 meters.

Applications

- ★ POS system
- ★ EFT POS system
- ★ Gym, post, civil aviation system
- ★ Inquiry, service system
- ★ Instrument test
- ★ Tax, Tab

Packing

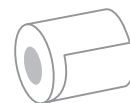
Printer & accessories

User manual	1PC
Printer	1PC
Power cable	1PC
Power adapter(24V)	1SET
Paper roll	1ROLL
Driver	1PC

Features

- 160mm/s,200mm/s,230mm/s,260mm/s high printing speed
- Support kitchen ,network printing
- Support cash drawer driver
- Support black mark orientation
- Parallel, Serial, USB, LAN interface optional
- Built-in data buffer(Able to receive new data while printing)
- Characters can be enlarged, adjusted line spacing, left and right spacing, as well as bold and under line
- Support different density NV bitmap download and printing
- ESC/POS compatible, setting DIP switch to choose characters and fonts
- Support configuration through WEB, multiple connect printing
- Through software binding to set printer identification
- Support international languages

Avoid order missing



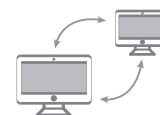
High printing speed



ID Identity



Support network printing



Support OPOS driver



Support international languages

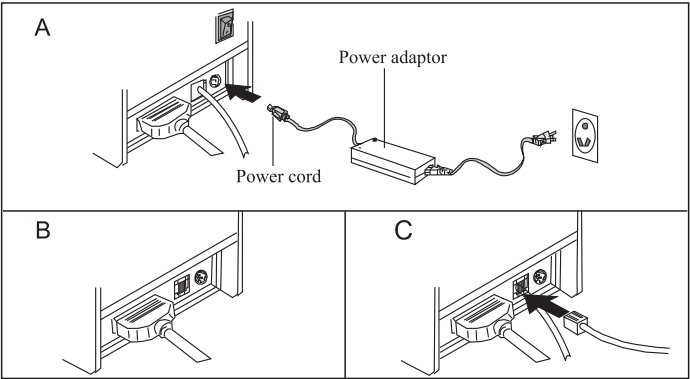


Specifications

Printing method	Direct thermal
Printing speed	160mm/s,200mm/s, 230mm/s, 260mm/s
Black mark detection	Support
Network monitoring	Support
Roll paper	Paper width: 79.5 ± 0.5mm Diameter: 83mm
Column capacity	576 dots/line or 512 dots/line
Character size	ANK, Font A: 12×24 dots Font B: 9×17 dots simplified/traditional Chinese: 24x24 dots
Command	Compatible with ESC/POS
Interface (optional)	Serial/Parallel/USB/LAN, USB+Serial
Auto cutter	Full or Partial (optional)
Reliability	Printing head life:100 km
Barcode	UPC-A/UPC-E/JAN13(EAN13)/JAN8(EAN8)/ CODE39/ITF/CODABAR/CODE93/CODE128
Paper thickness	0.06~0.08mm
Adaptor input voltage	AC 110V/220V, 50~60Hz
Power supply	DC 24V≐2.5A
Printer input voltage	DC 24V≐2.5A
Cash drawer control	DC 24V≐1A
Working environment	Temperature (0~45℃), humidity (10~80%)
Storage environment	Temperature (-10~60℃), humidity (10~90%)
Drivers	Win 9X/Win 2000/Win 2003/Win XP/Win 7/Win 8/Win 10/Linux

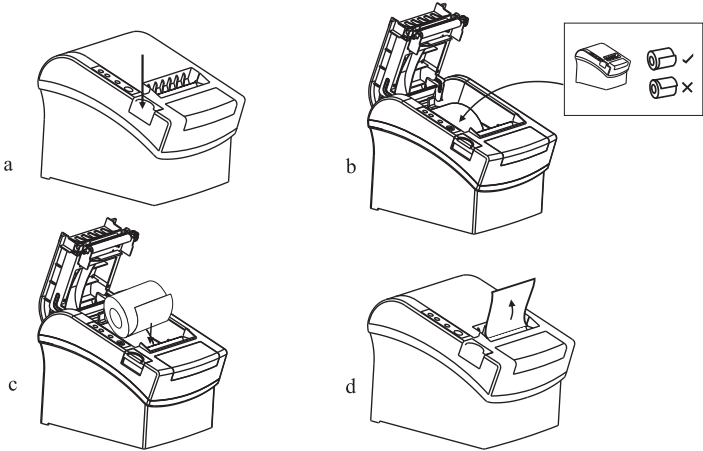
Connection

- A. Connect AC power cord to power, DC power cord to printer.
- B. Connect printer and computer/ tablet.
- C. Connect cash drawer.



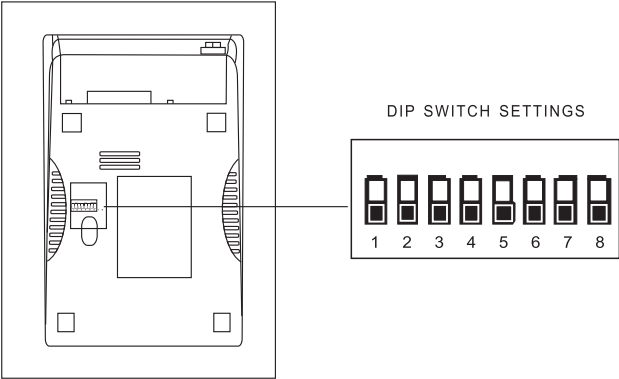
Paper roll loading

- 80mm thermal paper roll recommended to 80mm series printers.
- The method of paper loading is as below:
- a. Open top cover
 - b. Drop paper roll in the hole as below
 - c. Pull the paper into the paper holder, then close top cover
 - d. Print one self-test to make sure paper correctly installed.



Setting printing Mode(DIP Switches)

DIP switches can be changed settings, such as: mark sensor, cutter, languages, beeper, print density baud rate etc.



DIP switch functions

DIP Function				
NO.	Function	ON	OFF	
SW-1	Select cutter	NO	YES	
SW-2	Select beeper	YES	NO	
SW-3	Print Density setting	NO	YES	
SW-4	Two-byte character code	NO	YES	
SW-5	Character per line	42	48	
SW-6	Retain	----	----	
SW-7-8	Transmission speed (serial port is effective)			
SW-7	ON	OFF	ON	OFF
SW-8	ON	ON	OFF	OFF
Transmission speed (bps) - bit/s	38400	115200	9600	19200

Button name, indicator LED light and function

(1) FEED button

Press to FEED paper manually.

(2) Paper indicator(LED light)

Blue and red light are on means lack of paper, no alarm means all goes well.

(3) Power indicator

Light is on means connected properly.

(4) Error button

When out of paper, cutter error or printing head overheat occurred, the ALARM indicator twinkles.

Self Test

Method: When printer is connected power, turn off , press “FEED” button and turn on at the same time, 2 seconds later release “FEED” button, a completed self test will be printed out to show printer settings.

Method to enter hexadecimal mode

Method: When printer is connected power, press“FEED” button and turn on at the same time for about 10 seconds, release “FEED” button to enter data hex dump mode. it will print “Hexadecimal Dump”on the paper.

Reset

Method: When printer is connected power, press“FEED” button and turn on at the same time for about 20 seconds, reset succeed if beeper peals.

Cutter stuck maintenance

Method (1)

Turn off the power and then restart.

Method (2)

Turn the gear on printing head , cutter can be returned to its original position.

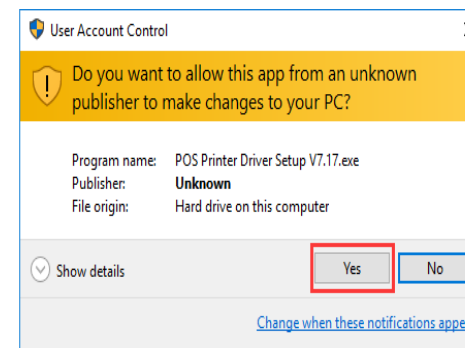
⚠ Notice: To avoid the damage of the printing head and automatic paper cutter, please do not open cutter and mechanism violently.

Driver installation

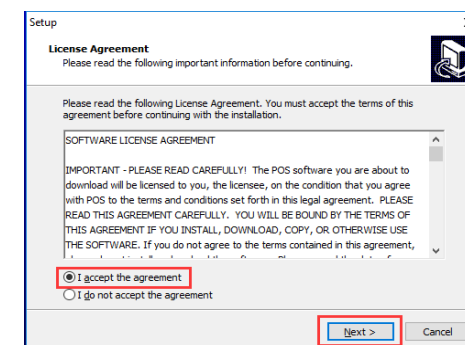
Two method: 1) Install driver directly.
2) Printing via port directly.

1) Install driver under WINDOWS OS (Steps as below):

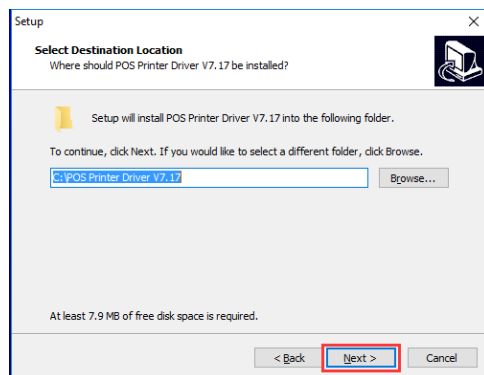
1.Double click  driver.



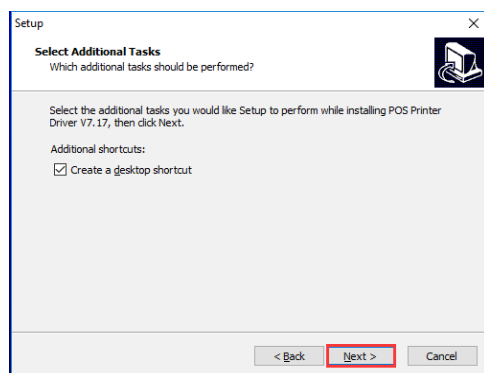
2.Select: I accept the agreement.



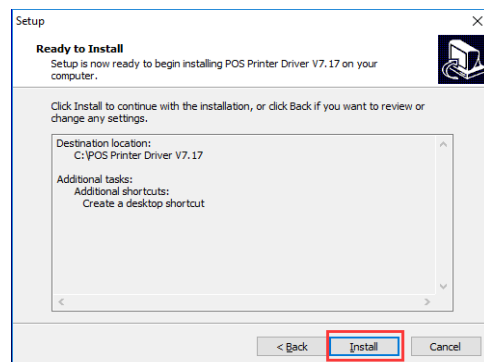
3. Default installation folder.



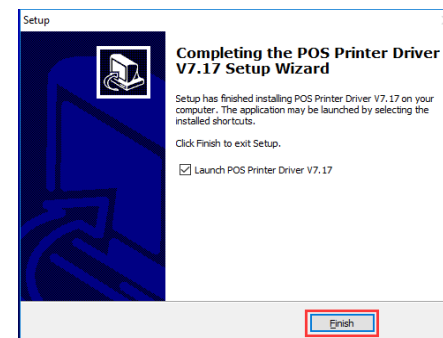
4. Create a shortcut on the desktop.



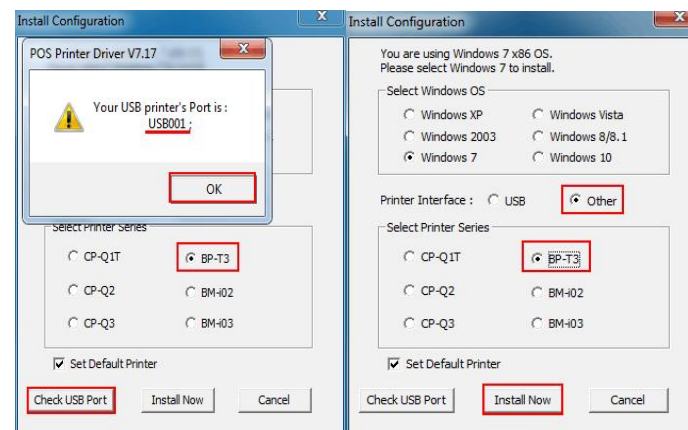
5. Install by below instruction:



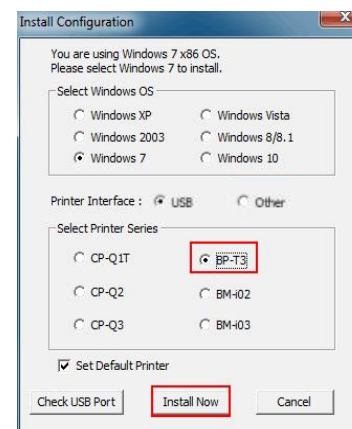
6. Finished.



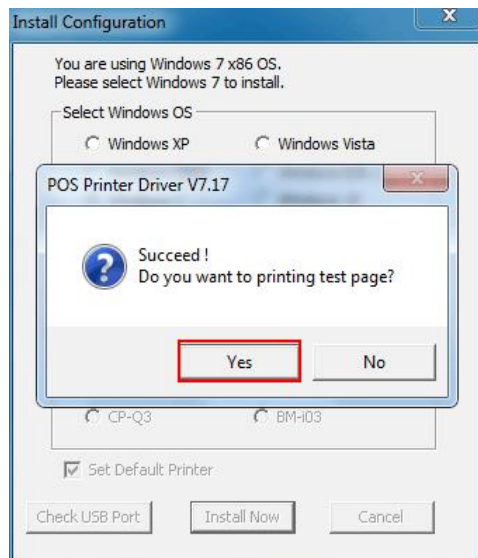
7. Choose the right port, shown as below:



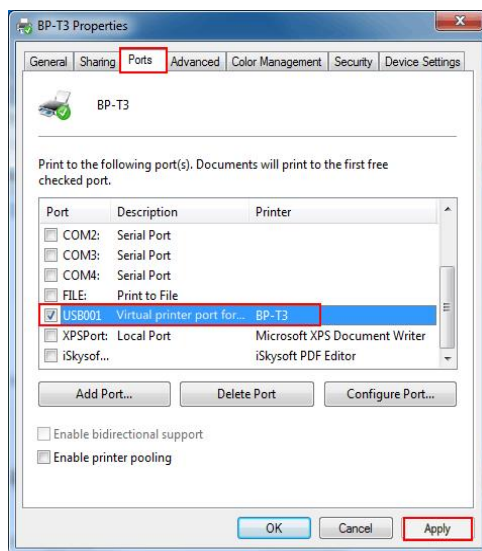
8. Choose the right series, shown as below:



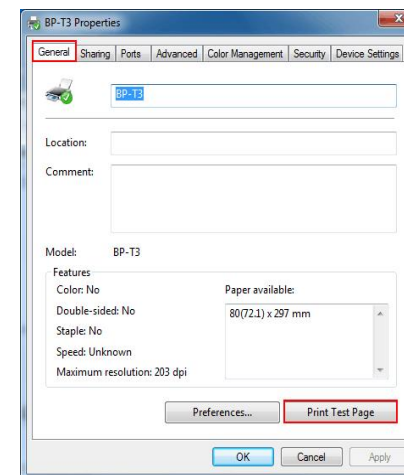
9. Click “OK” to configure the port.



10. Choose the detected USB001, click apply, shown as below :



11. Select general and print test page.



2) Printing via port directly

- No need to install printer driver. Directly choose a right port (i.e., USB, LAN, Serial, Parallel) in software.
- Printing via port needs commands to control printer, ESC/ POS commands are integrated directly itself.

Clearance

One of the followings occurred, please clean printing head.

- Printing is not clear
- Any vertical column is not clear
- Paper feed noisily.

Printing head cleaning steps:

- Turn printer off, release power cord. Open top cover, take out paper roll.
- Wait till printing head cooling if it just finished printing.
- Clean printing head completely using swab with alcohol (without water).
- Until alcohol completely volatilized, close top cover.
- Connect power again, print self test to check if it is clean.

! Notice:

- Please make sure power off when maintaining printer.
- Don't touch or scratch printing head surface, roller and sensors.
- Avoid gas, acetone or other organic solvent.
- Wait till alcohol completely volatilized, close top cover and connect power again. Try print self test to make sure it works properly.